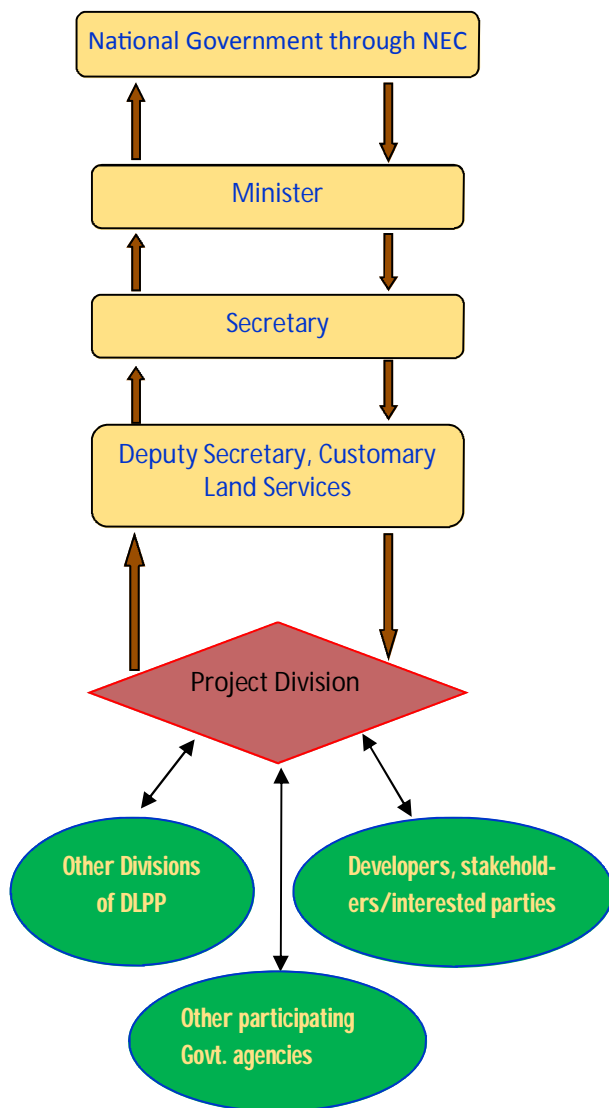


IMPACT PROJECT IMPLEMENTING PROCESS:



OUR CONTACTS

Director, Impact Projects	301 3154
Manager Projects (Renewable)	301 3267
Manager Projects (Infrastructure)	301 3283
Manager Projects (Non-Renewable)	301 3286



CUSTOMARY LAND PROJECTS



Customary Land Projects Division
Department of Lands and Physical Planning
PO BOX 5665, BOROKO
National Capital district

Fax: 301 3299
Website: www.lands.gov.pg

Purpose:

Facilitate the accessing of land required for the establishment or development of all Government sanctioned projects.

Core functions of the Division

- Assist in the general administration and management of alienated land pertinent to Government sanctioned projects
- Facilitate and encourage Customary land Development required for the establishment and development of Government sanctioned projects
- Facilitate through DLPP the Government's land alienation process by acquiring or accessing customary land and avail them for impact projects development of national significance.

The Division has 3 Units that performs specific roles to implement its core functions.

1. Renewable Projects

This Project Unit's main activity is to access land required for the development of Government sanctioned Impact projects for the development and utilization of renewable land and renewable land resources in the areas of agriculture, forestry, fisheries etc.

2. Non-Renewable Projects

This Projects Unit's core function is to facilitate land access for the development of Government sanctioned Impact Projects. These are projects of land based resources or mineral resources by the extractive industries for additional land that could not be accessed as per the provisions in the Mining and Oils and Gas Acts whereby the resources are of non-renewable such as in the areas of Mining, Petroleum as well as Oil and Gas development.

3. Infrastructure Projects

This Project Unit's core function is to facilitate land access for development and establishment of the Government Sanctioned Infrastructure Projects like roads, bridges, wharves, ports, aerodromes, etc.



PROCEDURES AND PROCESSES

- 1) Endorsement of project by Government of PNG through an MOA between National and Provincial Governments, Investors and Landowners.
- 2) Application with the Development Plan and endorsement to the project by NEC submitted by NEC/Developer to DLPP for acquiring the land for the project.
- 3) DLPP through the Deputy Secretary-Customary Land instructs the Director, Customary Land Projects to take lead in making land available for the project
- 4) Director, Customary Land Projects instructs the project team to facilitate acquiring of land
 - 4.1) Project Team liaises with the Investor on the project whilst ensuring status check on land required
 - 4.2) Request Land Investigation Report (LIR) Instruction Number to be issued if the land is customary land and confirm on its ownership status if State land
 - 4.3) LIR conducted with ILGs in conjunction with LIR (Customary Land). Apply for acquiring the land initially under License/Exemption (State Land)
 - 4.4) Received LIR is verified and checked
- 5) Lease-Lease back arrangement and execution of the same under Section 11 and 102 (Customary land)/Lease title issued (state land)
- 6) Project implemented or land secured and availed for development